

TABLE OF CONTENTS

<u>Section</u>		<u>Page</u>
	TABLE OF CONTENTS	i
	LIST OF FIGURES	ii
1	GENERAL DESCRIPTION	1-1
2	INSTALLATION	2-1
	2.1 Unpacking and Inspection	2-1
	2.2 Selecting Location	2-1
	2.3 Leveling the Vender	2-1
	2.4 Assembling Loose-Shipped Items	2-1
	2.5 Coin Mechanism Adjustment	2-2
	2.6 Adjusting Bottle Shelves and Bottle Depth Guide Bars	2-2
	2.7 Main Door Adjustments	2-3
	2.8 Loading the Vender	2-4
	2.9 Service Cord Ground	2-4
	2.10 Installation Check List	2-4
3	OPERATION	3-1
	3.1 Operating Controls and Indicators	3-1
	3.2 Starting the Unit	3-1
	3.3 Vend Cycle	3-1
	3.4 Stopping the Unit	3-1
4	SERVICE AND MAINTENANCE	4-1
	4.1 Cleaning	4-1
	4.2 Servicing	4-1
	4.3 Lubrication	4-1
	4.4 Adjusting Vend Rack Assembly	4-1
5	TROUBLESHOOTING	5-1
	5.1 Coin Mechanism	5-1
	5.2 Refrigeration System	5-2
	5.3 Vend Mechanism	5-2
6	PARTS LISTS	6-1
	6.1 Introduction	6-1
	6.2 Index Number	6-1
	6.3 Part Number	6-1
	6.4 Description	6-1
	6.5 Quantity Per Assembly	6-1

LIST OF FIGURES

<u>Figure</u>		<u>Page</u>
2-1	Coin Changer Adjustments	2-2
2-2	Vend Rack and Bottle Shelf Adjustments	2-2
2-3	Bottle Depth Adjustment	2-3
2-4	Latch Strike Assembly	2-3
3-1	Vend Cycle	3-2
4-1	Adjusting Vend Rack Assembly	4-2
5-1	Wiring Diagram	5-4
6-1	Slant Shelf Bottle Vender Assembly	6-2
6-2	Main Door Assembly	6-6
6-3	Vend Door Assembly	6-9
6-4	Mechanism Door Assembly	6-10
6-5	Cabinet Assembly	6-12
6-6	Vend Rack Assembly	6-16
6-7	Refrigeration Chassis Assembly	6-20

SECTION 1

GENERAL DESCRIPTION

1. GENERAL DESCRIPTION

1.1 The Selectivend Selectivend Slant Shelf Bottle Vender is a compact, lightweight, electrically powered unit designed for controlled cooling and semi-automatic vending of bottled products. The bottle vender consists basically of a refrigeration system, a thermostat, a precool shelf (Models 96 and 132 only), a vend rack assembly, a bottle shelf assembly, and coin mechanism, all housed in an insulated sheetmetal cabinet.

1.2 The refrigeration assembly, with the exception of the evaporator, the evaporator fan motor, and the thermostat, is mounted to the cabinet base with two rear brackets and two front bolts. The evaporator, the evaporator fan motor, and the thermostat are located at the bottom of the cabinet interior.

1.3 The precool shelf is located at the top of the cabinet interior. Bottles on the precool shelf must be transferred to the bottle shelves by hand.

TABLE 1-1. DESIGN DATA

Name of Equipment	Selectivend Slant Shelf Bottle Vender
Manufacturer	Selectivend, Inc.
Over-all Dimensions:	
Model 64:	
Width	25-3/4 inches
Depth	21-3/4 inches
Height	54-1/2 inches
Shipping Weight (approximate)	332 pounds
Model 96:	
Width	25-3/4 inches
Depth	21-3/4 inches
Height	71 inches
Shipping Weight (approximate)	409 pounds
Model 132:	
Width	31-1/2 inches
Depth	21-3/4 inches
Height	71 inches
Shipping Weight (approximate)	487 pounds
Thermostat:	
Model 64:	
Normal Cut-in	38 ± 1°F
Normal Cutout	15.5 ± 2°F
Models 96 and 132:	
Normal Cut-in	35.5 ± 1°F
Normal Cutout	13 ± 2°F
Electrical Requirements:	
All Models	115-volt, 60-cycle
Maximum Current Draw:	
Model 64	7 amp
Model 96	7 amp
Model 132	8.6 amp

TABLE 1-1. DESIGN DATA (Continued)

Compressor Horsepower:	
Model 64	1/4 H. P.
Model 96	1/4 H. P.
Model 132	1/3 H. P.
Type of Refrigerant:	
All Models	Freon R-12
Amount of Refrigerant:	
Model 64	10.5 ounces
Model 96	11.0 ounces
Model 132	12.0 ounces

SECTION 2

INSTALLATION

2. INSTALLATION

2.1 UNPACKING AND INSPECTION

NOTE

The unit was thoroughly inspected before leaving the factory and the carrier has accepted and signed for it. Any damage or irregularities should be noted at the time of delivery and immediately reported to the delivering carrier. Request a written inspection report from the Claims Inspector to substantiate any necessary claim. File the claim with the delivering carrier, not with Selectivend, Inc.

a. Inspect the outside of the carton for visible damage.

b. Cut only the bottom metal band on the carton. Lift carton up and off vender.

c. Use sharp tool to split the protective boards mounted to the bottom of the vender with the leveling legs.

d. Remove shipping tape and open vender.

e. Inspect loose-packed items listed below and make sure items are present and in good condition.

Item	Part Number	Name	Quantity
1	No Number	Door Lock Key	2
2	No Number	Coin Box Key	2
3	Various	Coin Mechanism	1

2.2 SELECTING LOCATION

2.2.1 When installing the can vender for use, select a location that is easily accessible and will allow ample room for servicing the vender. Location should be near an electrical outlet with the proper voltage. Allow a minimum space of three inches behind the vender for proper air circulation.

2.3 LEVELING THE VENDER

2.3.1 A threaded leveling leg is located in each corner of the vender base. Adjustments are made by opening the vender main door and turning each leveling leg from the inside. Adjust each leveling leg until the vender stands "solid" and the vender door will remain open in any position. Make certain all leveling legs are in contact with the floor.

2.4 ASSEMBLING LOOSE-SHIPPED ITEMS

2.4.1 Coin Mechanism.

a. Loosen three mounting screws below dashboard panel on main door.

b. Remove slug rejector from coin mechanism.

c. Install coin mechanism on three mounting screws. Tighten screws.

d. Connect coin mechanism service cord to Jones receptacle on right side of main door. Make certain service cord does not interfere with operation of coin release lever.

e. Check alignment of coin mechanism with coin chute on top of coin box.

f. Install slug rejector on coin mechanism. Check operation of coin release lever.

2.5 COIN MECHANISM ADJUSTMENT (See Figure 2-1.)

2.5.1 If Simplex II coin changer (manufactured by National Rejectors, Inc.) is to be installed in the vender, adjust the coin changer as shown in Figure 2-1.

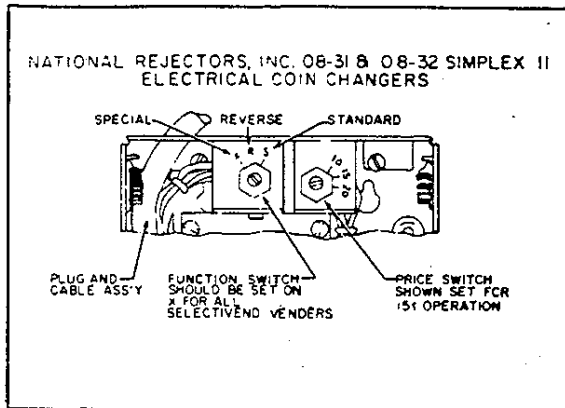


Figure 2-1. Coin Changer Adjustment

2.6 ADJUSTING BOTTLE SHELVES AND BOTTLE DEPTH GUIDE BARS. (See Figure 2-2 and 2-3.)

2.6.1 When the bottle shelves and bottle depth guide bars are installed, the following adjustments must be made to compensate for bottle diameter, bottle length, and bottle shape.

CAUTION

Do not intermix different type bottles on any shelf.

2.6.2 Bottle Diameter Adjustments.

2.6.2.1 Set each vend tray for diameter of bottle to be vended by inserting vend tray adjustment rod in one of three holes adjacent to bottle vend port as shown in Figure 2-2. Make sure rod enters corresponding hole in channel at rear of vender. Tab at rear of vend tray must seat in corresponding notch of rear channel so vend tray is level. Location of vend tray adjustment rod determines clearance between vend tray and lockout arm as shown in Figure 2-3. Adjustment rod is located correctly when lockout arm will not allow bottle to pass from bottle shelf to vend tray when mechanism is in vend position.

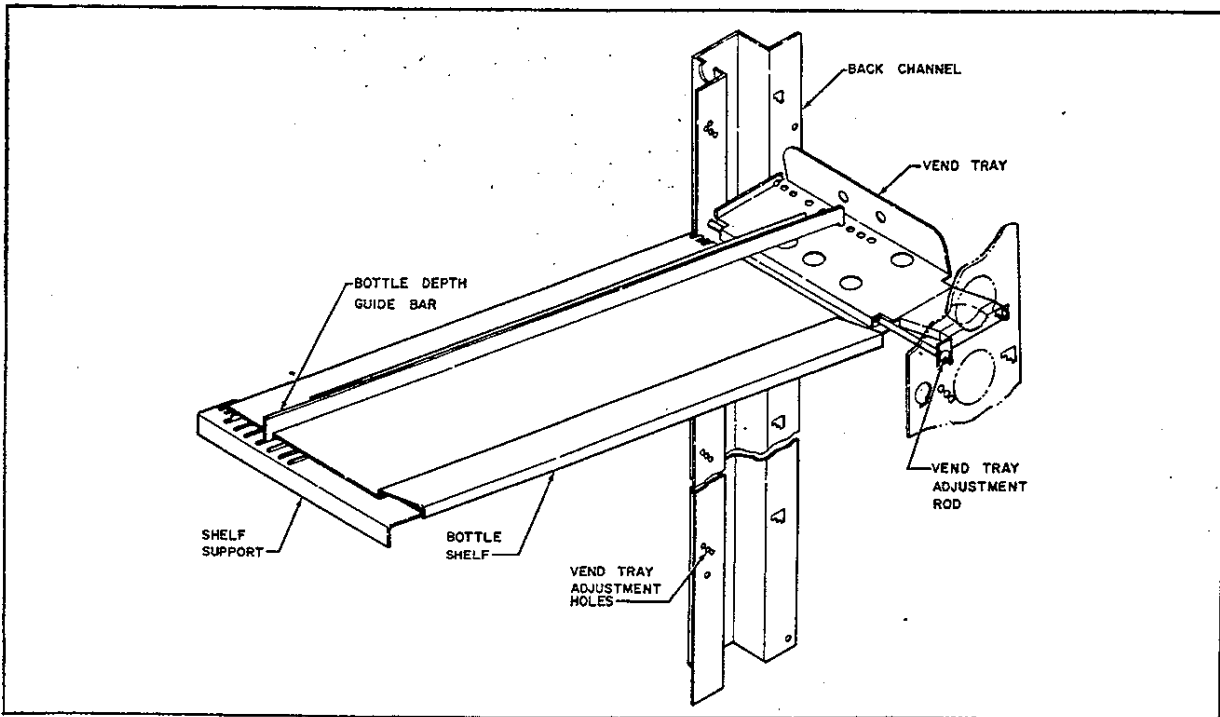


Figure 2-2. Vend Rack and Bottle Shelf Adjustment

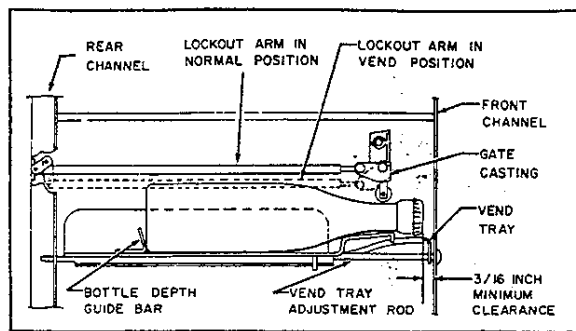


Figure 2-3. Bottle Depth Adjustment

2.6.3 Bottle Length Adjustment.

2.6.3.1 Position bottle to be vended on bottle shelf as shown in Figure 2-3, so bottom of bottle is against bottle depth guide bar. Minimum clearance between bottle crown and vend port panel is 3/16 inch. Position bottle depth guide bar in one of seven holes of vend tray that will allow this clearance. Install other end of bottle depth guide bar in corresponding slot in shelf support at opposite side of cooling compartment.

2.6.4 Bottle Shape Adjustment.

2.6.4.1 Position bottle to be vended on bottle shelf as shown in Figure 2-3. Make sure bottom of bottle butts against bottle depth guide bar. Install bottle shelf tab in one of three bottle shelf slots in vend tray that will permit body of bottle to have full contact with shelf, and so neck of bottle will ride on bottle neck support of shelf. Install other end of shelf in corresponding slot of shelf support at opposite side of cooling compartment.

NOTE

During Bottle Shape Adjustment, paragraph 2.6.4 preceding, bottle depth guide bar may be removed, but must be re-installed in same slots as determined during bottle length adjustment.

2.7 MAIN DOOR ADJUSTMENTS. (See Figure 2-4.)

2.7.1 Latch Strike Assembly. If main door does not latch tightly, adjust latch strike assembly as follows:

a. Loosen screws "A" that secure latch strike adapter to cabinet.

b. Slide latch strike adapter up or down, as needed. Tighten screws "A".

c. Open, close, and latch main door several times to check latch operation.

d. If necessary, repeat steps a through c until door latches securely.

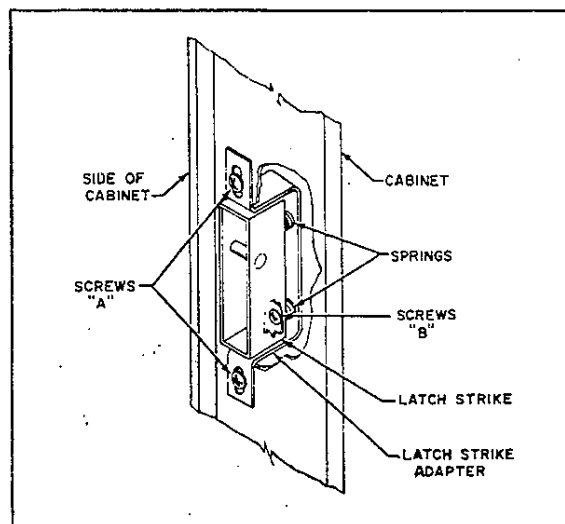


Figure 2-4. Latch Strike Assembly

2.7.2 Gasket Seal. If main door gasket does not seal properly, operation of refrigeration system will be affected. Check and adjust door gasket as follows:

a. Unlatch and open main door.

b. Insert sheet of paper between door gasket and cabinet. Close and latch main door.

c. Attempt withdrawal of paper. Door gasket should retain paper.

NOTE

If door gasket grips paper, seal adjustment is not necessary. If paper can be withdrawn, adjust door seal as outlined in following steps.

d. Unlatch and open main door.

e. Turn screws "B" (2), securing latch strike to latch strike adapter, clockwise 1/2 turn.

f. Recheck door gasket seal and, if necessary, make additional adjustment as outlined in steps b through e until door gasket seal is tight.

sure each bottle is reasonably straight and pushed against bottle depth guide bar. Install applicable bottle crowns in tabs at left side of vend rack front channel.

CAUTION

Do not intermix different type bottles on any shelf.

2.8 LOADING THE VENDER

2.8.1 Shelves. When all adjustments are completed for each shelf, load unit accordingly. Make

2.8.2 Precool Shelf. Bottles loaded on precool shelf must be placed in corded position for the greatest storage capacity.

TABLE 2-1. CAPACITY OF SLANT SHELF VENDERS

Model	Shelves	Vends	Pre-Cools
64	8	64 (6 or 7 ounce bottles)	--
96	12	96 (6 or 7 ounce bottles)	28
132	12	132 (6 or 7 ounce bottles)	46

2.9 SERVICE CORD GROUND

2.9.1 Vender must be grounded. The vender service cord is equipped with a three-prong plug that grounds the unit automatically when inserted into a three-prong outlet. If a three-prong outlet is not available, install a two-prong adapter with a pigtail ground wire in the two-prong outlet, and plug the vender power cord into the adapter. Make sure the pigtail ground wire on the adapter is connected to a good ground.

2.10 INSTALLATION CHECK LIST

2.10.1 Make sure the following installation conditions exist before starting bottle vender.

a. All components are installed on vender and are in good condition.

b. Vender is clean, especially lighted sign glass.

c. Vender is properly located for access to power source outlet and at least 3 inches from wall.

d. Thermostat is set for correct temperature range.

e. Electrical switches and other components are in good operating condition and securely mounted.

f. Bottle shelves and bottle depth guide bars have been properly installed and adjusted.

g. Bottle shelves are properly loaded and precool shelf is filled.

h. Service cord plug-in receptacle is grounded or ground adapter has been installed.

SECTION 3

OPERATION

3. OPERATION

3.1 OPERATING CONTROLS AND INDICATORS

3.1.1 Thermostat. The thermostat automatically controls the temperature of the bottled products by controlling the refrigeration cycle. A temperature sensing element, located in a well attached to the end of the evaporator, senses the temperature of the cabinet interior. Whenever the cabinet temperature exceeds or falls below the preset temperature range, the thermostat actuates a switch that will start or stop the compressor and condenser fan motor to insure maintenance of the correct cabinet temperature.

3.1.2 Coin Vending Mechanism. The coin vending mechanism controls the vending operation by controlling the electrical vending circuits. Refer to separate vending mechanism instruction manual for necessary adjustments.

3.1.3 Coin Release Lever. The coin release lever is located on the mechanism door. Turn the lever to release defective coins.

3.2 STARTING THE UNIT

3.2.1 Plug vender power cord into grounded outlet of proper voltage. The compressor, condenser fan motor, and evaporator fan motor should all start, and the sign should light. Approximately 3-1/2 hours are required to cool the bottles on the shelves. When the specified temperature is reached, the evaporator fan motor will continue to run, and the compressor and the condenser fan motor will cycle on the thermostat control.

3.3 VEND CYCLE

3.3.1 Figure 3-1 illustrates the sequence of mechanical (block arrows) and electrical (line arrows) events that occur during the vend cycle.

3.4 STOPPING THE UNIT

3.4.1 To stop vender, disconnect vender service cord from electrical outlet.

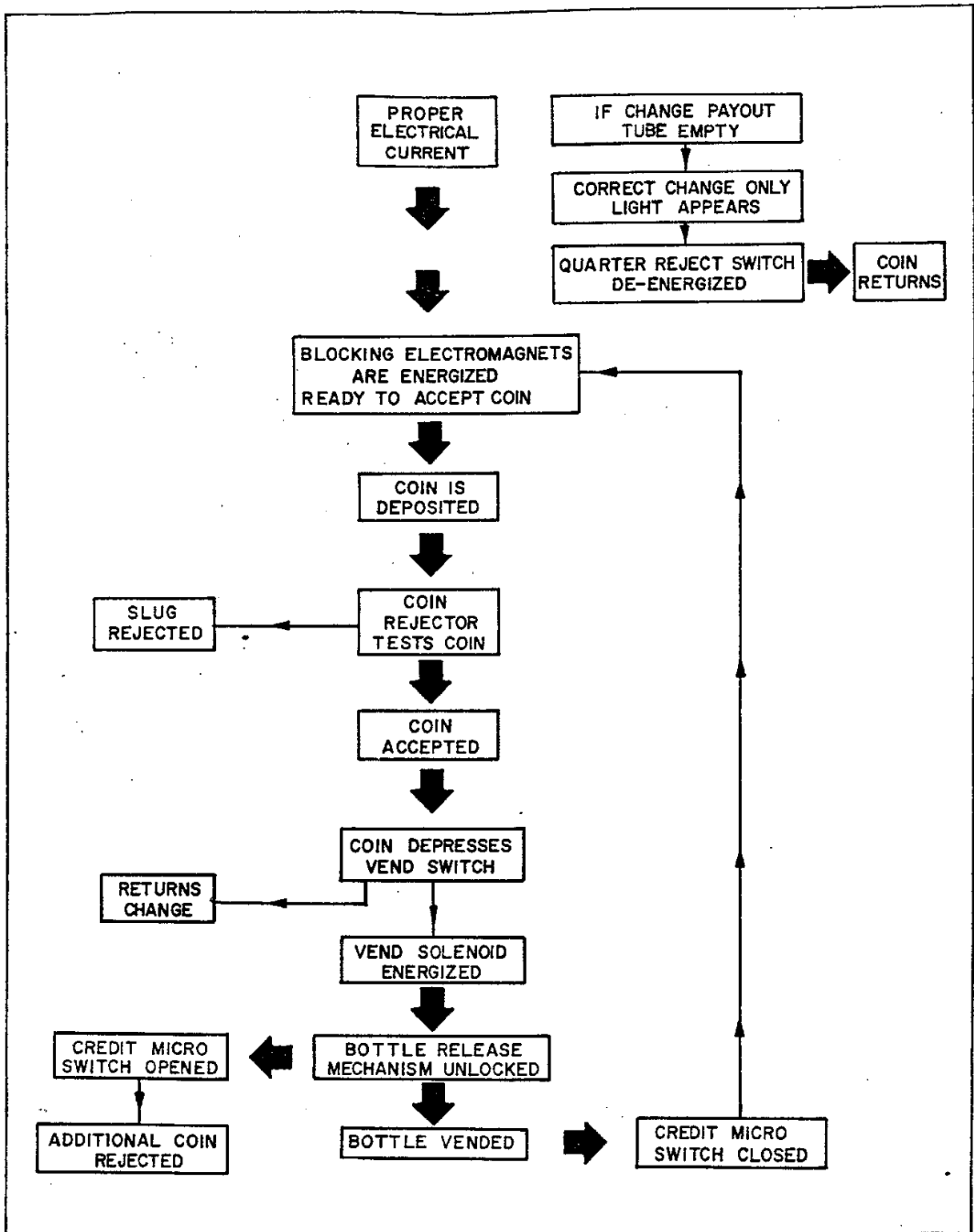


Figure 3-1. Vend Cycle

SECTION 4

SERVICE AND MAINTENANCE

4. SERVICE AND MAINTENANCE

4.1 CLEANING

4.1.1 Vender Exterior. Wash vender with soap and water. Dry with soft cloth. Polish exterior surfaces with auto wax.

4.1.2 Vender Interior. Wash interior of cabinet with soap and water. Odors may be eliminated by including baking soda or ammonia in cleaning solution. Remove and clean drain hose to eliminate any deposits that may restrict condensate water flow.

4.1.3 Refrigeration System. Clean dust from condenser with soft bristle brush or vacuum cleaner. Remove dirt or debris from refrigeration system compartment. Remove and clean condensate pan.

4.1.4 Bottle Shelf and Vend Rack. Remove bottle shelf and vend rack from vender and wash thoroughly in warm soap water. Rinse with clean, warm, water, and wipe dry with clean cloth.

4.1.5 Crown Box. Remove crown box and empty contents. Wash crown box in warm soap water. Rinse with clean water and dry with clean cloth.

4.2 SERVICING

4.2.1 Sign Lamp Replacement. Remove two screws attaching sign panel to main door and remove panel by pulling out on bottom of panel. Remove fluorescent lamp from socket and replace with new lamp. Install sign panel in reverse procedure of removal.

4.2.2 Selection Port Lamp Replacement. Remove screw attaching plastic lens clip to main door liner. Bend clip out and remove lens. Remove lamp and replace with new lamp. Install plastic lens and clip in reverse procedure of removal.

4.2.3 Door Sealer Gaskets. Remove screws securing gaskets to door panel and remove old gaskets. Install new gaskets in reverse procedure of removal.

4.2.4 Selection Door Glass. Remove spring hinge assemblies from selection door. Remove retainer angle from hinge side of selection door. Pry frame and glass assembly out and remove broken glass. Replace glass and install in reverse procedure of removal.

4.3 LUBRICATION

4.3.1 Refrigeration System. The refrigeration system is permanently lubricated and requires no lubrication.

4.3.2 Vend Rack. After cleaning the vend rack, apply light coating of WD-40 spray lubricant (Cornelius Part No. 331849).

4.3.3 Coin Mechanism. Lubricate coin mechanism in accordance with manufacturer's instructions.

4.4 ADJUSTING VEND RACK ASSEMBLY

4.4.1 If gate lockout arm does not operate properly, adjust as follows: (See Figure 4-1.)

a. Use test gage and check that gap between locking support and anti-theft support is 1/16-inch.

b. To decrease gap, loosen two screws at top of vend rack assembly that attach adjustment ring until test gage is tight in gap. Tighten screws. Remove gage.

c. To increase gap, loosen two screws at top of vend rack assembly that attach adjustment ring to vendrack. Raise adjustment ring until test gage fits in gap. Push down on adjustment ring to make certain gage is tight in gap. Tighten screws. Remove gage.

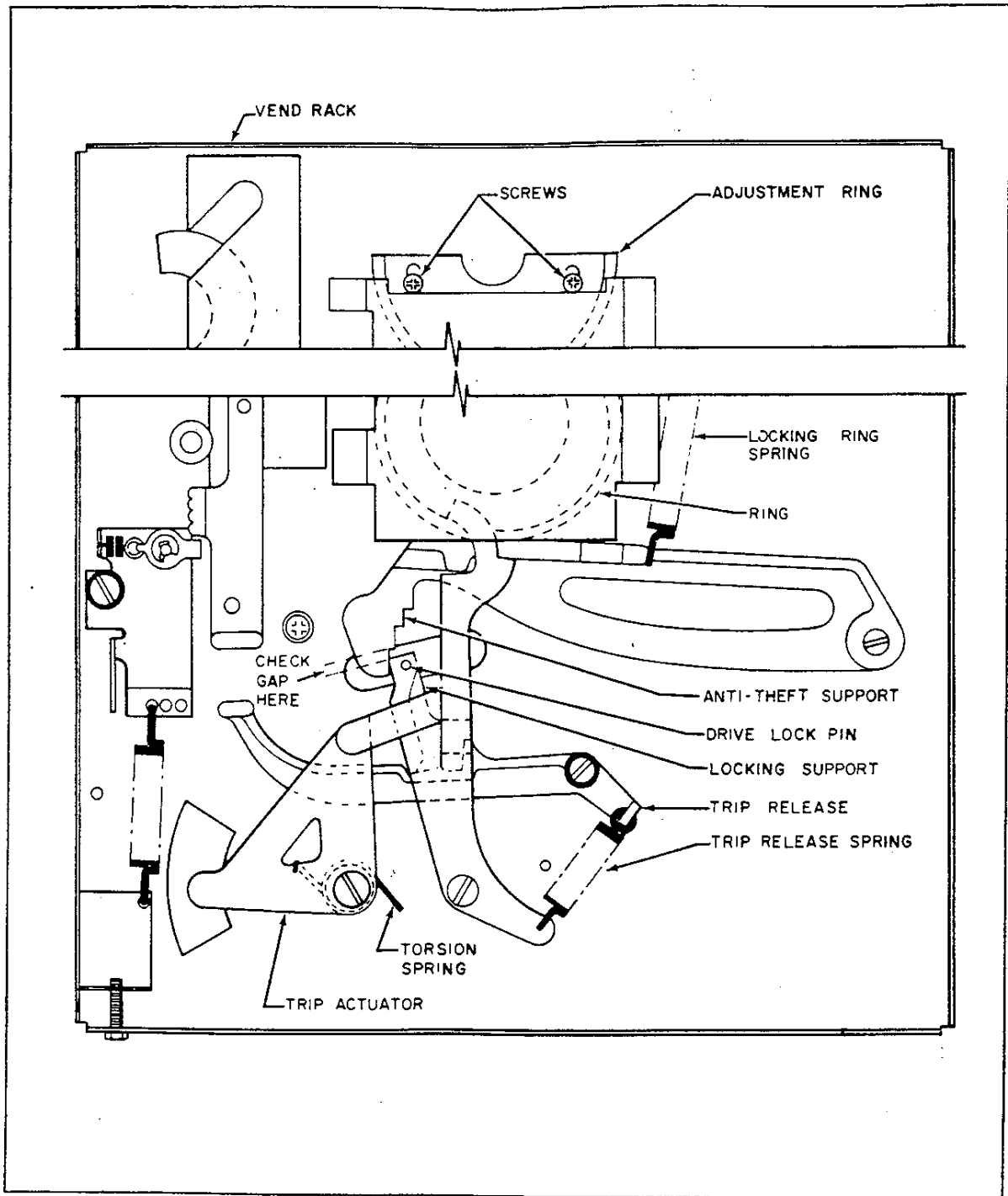


Figure 4-1. Adjusting Vending Rack Assembly

SECTION 5
TROUBLESHOOTING

5. TROUBLESHOOTING

Trouble	Probable Cause	Remedy
5.1 COIN MECHANISM		
5.1.1 Rejects good coins.	1. Coin mechanism not vertical or level.	1. Check leveling of vender.
	2. Coin paths are dirty.	2. Clean with hot water and detergent. Wipe dry with clean cloth.
	3. Coin mechanism out of adjustment.	3. Refer to coin mechanism service manual.
	4. Credit on vender	4. Take bottle out to cancel credit.
5.1.2 Accepts coins but does not vend bottle.	1. Defective vend rack solenoid.	1. Replace vend rack solenoid.
	2. Defective vend switch.	2. Replace vend switch.
	3. Cotter pin connecting vend rack solenoid to coupling and slide is broken.	3. Replace cotter pin.
	4. Trip actuator slipping off locking support.	4. Square contact surfaces and re-align.
5.1.3 Excess coin deposit not returned.	1. Credit microswitch lever bent, broken, or disconnected.	1. Replace microswitch.
5.1.4 Coin accepted but change not returned.	1. Bent coin jammed in change tube.	1. Remove bent coin.
5.1.5 Coin requiring change rejected but "Correct Change Only" light does not appear.	1. "Correct Change Only" bulb is burned out or loose in socket.	1. Tighten or replace bulb.
	2. Inoperative coin mechanism.	2. Refer to coin mechanism service manual.
	3. Credit on vender	3. Take bottle out to cancel credit.

TROUBLESHOOTING (Continued)

Trouble	Probable Cause	Remedy
5.1.6 Coin reject lever operates but coin is not returned.	1. Coin release lever is loose or broken.	1. Tighten or replace coin release lever.
5.2 REFRIGERATION SYSTEM		
5.2.1 Coin mechanism and vender light operates but compressor does not start.	1. Loose connection of compressor power cord at service harness receptacle. 2. Loose connection of thermostat terminals. 3. Inoperative compressor relay or overload protector.	1. Tighten connection. 2. Tighten connection. 3. Replace.
5.2.2 Compressor operates but condenser fan motor does not run.	1. Loose connection of fan motor wires on compressor terminals. 2. Fan blade movement obstructed. 3. Inoperative fan motor.	1. Tighten connection. 2. Clear fan blade obstruction. 3. Replace fan motor.
5.2.3 Evaporator fan motor does not operate.	1. Plug loose at service harness receptacle. 2. Fan blade movement obstructed. 3. Inoperative fan motor.	1. Insert plug snugly. 2. Remove obstruction. 3. Replace fan motor.
5.3 VEND MECHANISM		
5.3.1 Bottle does not advance to vend tray after bottle in chamber is vended.	1. Bottle depth guide bar not properly adjusted for bottle size. 2. Lockout arm disconnected from holding lever. 3. Lockout arm out of adjustment. 4. Wrong size bottle in shelf.	1. Adjust bottle depth guide bar. 2. Repair lockout arm and holding lever connection. Connecting pin may require replacing. 3. Refer to paragraph 4.4. 4. Check and correct.

TROUBLESHOOTING (Continued)

Trouble	Probable Cause	Remedy
5.3.2 Bottle vended from one chamber without coin deposit.	<ol style="list-style-type: none"> 1. Vend tray not properly adjusted for bottle diameter. 2. Push-slide roller on bottle release mechanism broken. 3. Ring finger bent or off. 	<ol style="list-style-type: none"> 1. Adjust vend tray. 2. Replace roller. 3. Replace
5.3.3 Bottle vended from all chambers without coin deposit.	<ol style="list-style-type: none"> 1. Bent or burred release mechanism pawl stuck in unlocked position. 2. Release mechanism pawl spring broken. 	<ol style="list-style-type: none"> 1. Repair or replace pawl. 2. Replace spring.

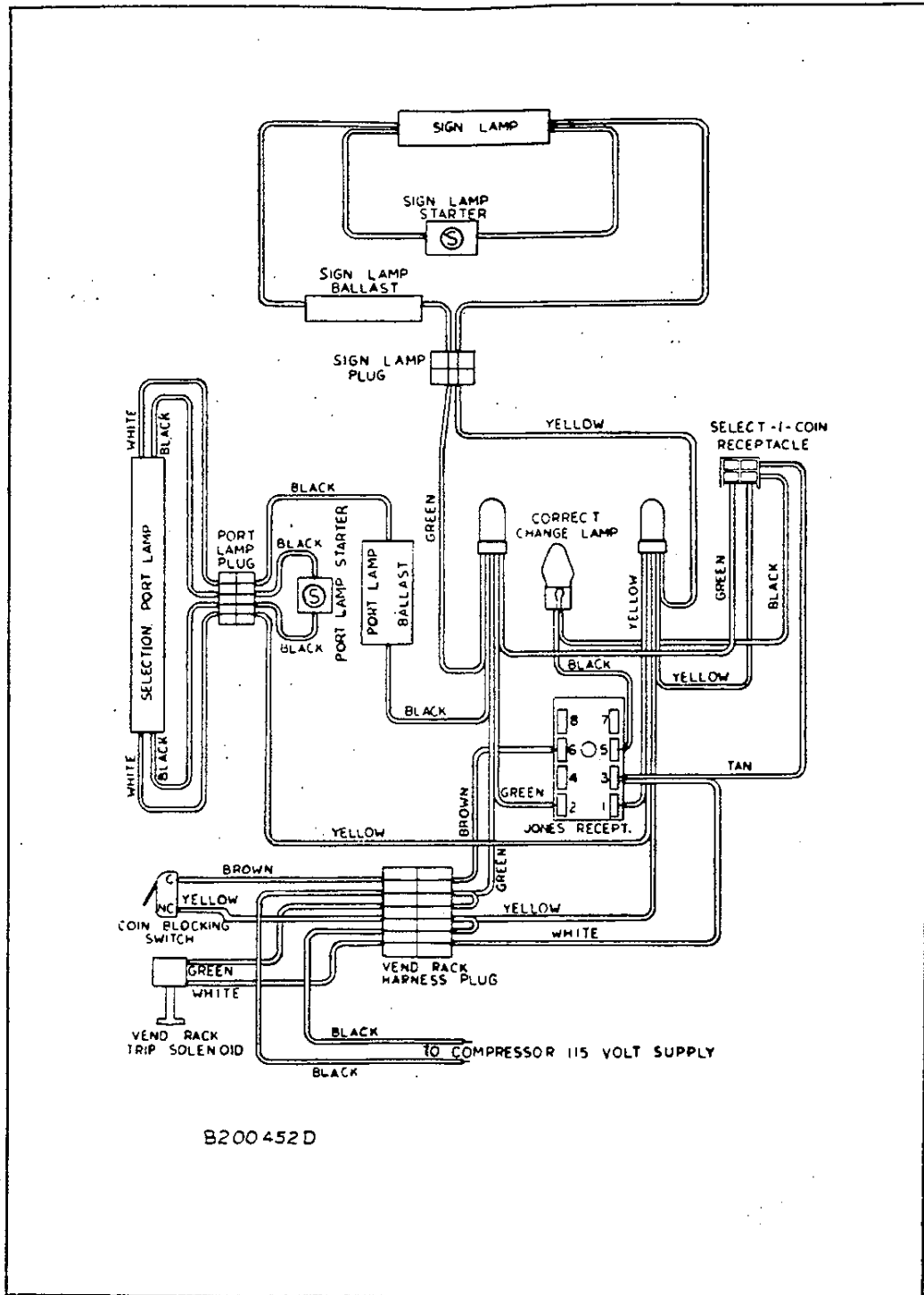


Figure 5-1. Wiring Diagram

SECTION 6

PARTS LISTS

6. PARTS LISTS

NOTE

REPLACEMENT OF PARTS IN THESE UNITS WITH OTHER THAN SELECTIVEND PARTS OR PARTS APPROVED BY THE SELECTIVEND, INC. VOIDS THE WARRANTY OF THESE UNITS.

6.1 INTRODUCTION

6.1.1 In the following parts lists, items that compose the Selectivend Slant Shelf Bottle Vender are listed in a logical sequence of disassembly. Exploded views are indexed to the parts lists and illustrate the listed items and their physical relationship to each other. The columnar data included in the parts list are explained in the following paragraphs.

6.2 INDEX NUMBER.

6.2.1 The number preceding the hyphen in the Index Number column is the number of the figure. The number following the hyphen is the number of the item in the figure.

6.3 PART NUMBER.

6.3.1 All items are listed by their Cornelius numbers. Where no Selectivend number exists, the designation "No Number" is used.

6.4 DESCRIPTION.

6.4.1 The listed items are described, as necessary, to completely identify the part. The description of the items which are part of the higher assembly is indented from the description of the higher assembly.

6.5 QUANTITY PER ASSEMBLY.

6.5.1 This column is subdivided into different versions of the Selectivend Slant Shelf Bottle Venders and is keyed to these venders as shown in Table 1. The quantities listed in these columns indicate the number of each part required for the next higher assembly for that particular version. The abbreviation "R" in these columns indicates the item is listed as a reference. The quantity requirements for these items are shown where the item is listed as a component of its next higher assembly. The abbreviation AR means "As required."

TABLE 1. VENDER KEY CODES*

<u>Key</u>	<u>Part Number</u>	<u>Description</u>
A	500716	Model 64 Selectivend Slant Shelf Bottle Vender
B	500709	Model 96 Selectivend Slant Shelf Bottle Vender
C	500691	Model 132 Selectivend Slant Shelf Bottle Vender

*Refer to paragraph 6.5 under Parts Lists.

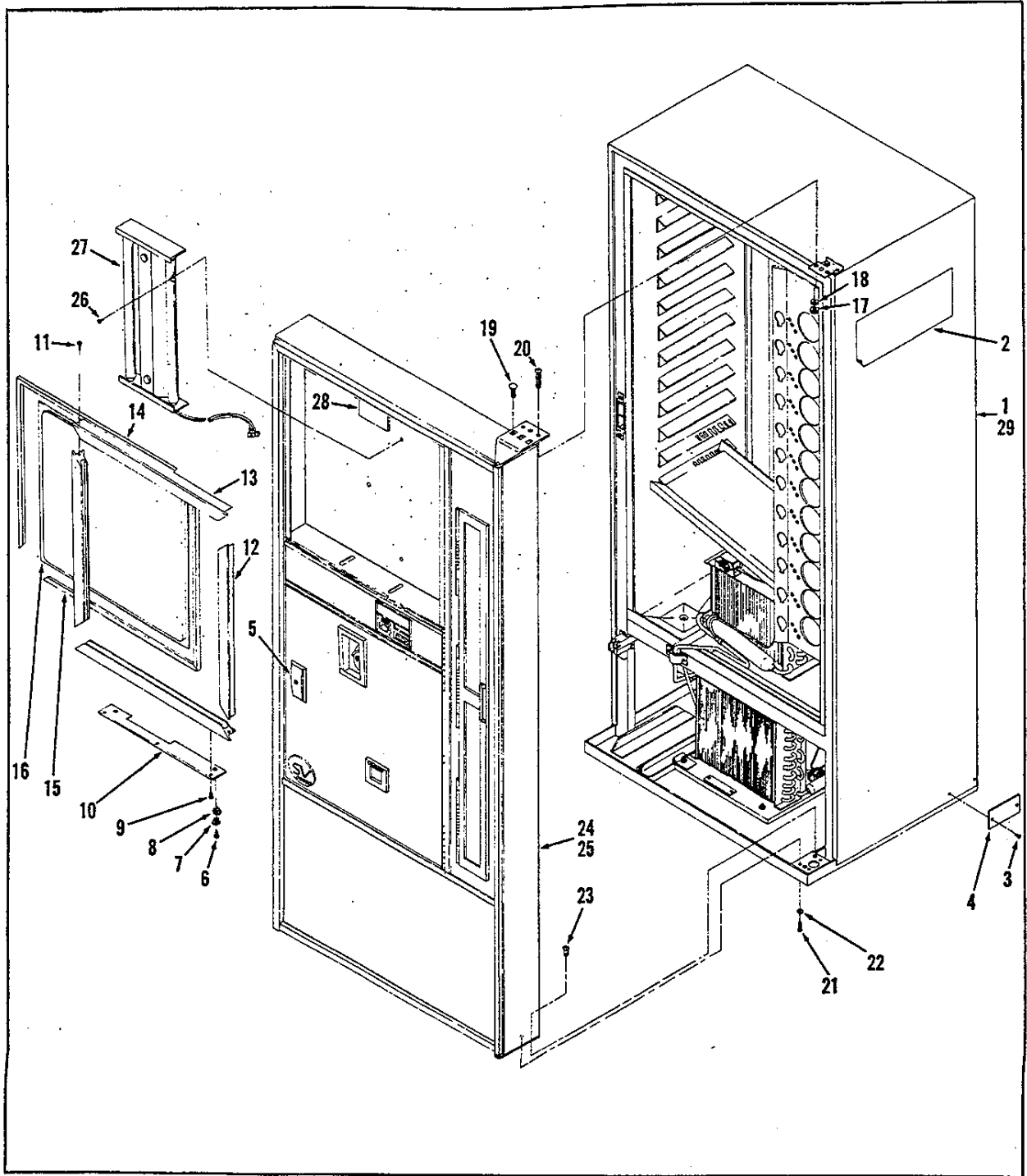


Figure 6-1. Slant Shelf Bottle Vender Assembly

FIGURE & INDEX NO.	PART NUMBER	DESCRIPTION	QTY. PER ASSEMBLY		
			A	B	C
6-1-	500716	MODEL 64 SELECTIVEND SLANT SHELF BOTTLE VENDER	1	-	-
	500709	MODEL 96 SELECTIVEND SLANT SHELF BOTTLE VENDER	-	1	-
	500691	MODEL 132 SELECTIVEND SLANT SHELF BOTTLE VENDER	-	-	1
1	102022-000	. STICKER, Caution	1	1	1
2	331754	. DECORATION, Side	1	-	-
	331855	. DECORATION, Side	-	1	-
	331856	. DECORATION, Side	-	-	1
3	200468-007	. SHEET METAL SCREW, Phillips Round Head, No. 4 by 3/8-in.	2	2	2
4	200331-002	. NAMEPLATE	1	-	-
	200331-003	. NAMEPLATE	-	1	-
	200331-004	. NAMEPLATE	-	-	1
5	202038	. LOCK CYLINDER AND KEY	1	1	1
6	200468-002	. SHEET METAL SCREW, Phillips Truss Head, No. 8 by 5/8-in.	2	2	2
7	200717-003	. WASHER, External Tooth, No. 8	2	2	2
6-1-	331884	. SIGN ASSEMBLY	1	-	-
	331885	. SIGN ASSEMBLY	-	1	-
	331886	. SIGN ASSEMBLY	-	-	1
8	091053-100	. . GROMMET, Plastic	2	2	2
9	200468-005	. . SHEET METAL SCREW, Phillips Truss Head, No. 6 by 1/4-in.	3	3	3
10	101166-000	. . RETAINER, Sign	1	-	-
	201065-000	. . RETAINER, Sign	-	1	1
11	332069-000	. . SHEET METAL SCREW, Phillips Truss Head, No. 7 by 1/2-in.	4	4	4
12	331925-002	. . FRAME, Sign, Side	2	-	-
	331925-003	. . FRAME, Sign, Side	-	2	-
	331925-006	. . FRAME, Sign, Side	-	-	2
13	331925-003	. . FRAME, Sign, Top and Bottom	2	-	-
	331925-006	. . FRAME, Sign, Top and Bottom	-	2	-
	331925-005	. . FRAME, Sign, Top and Bottom	-	-	2
14	331926-002	. . RETAINER, Gasket, Side	2	-	-
	331926-003	. . RETAINER, Gasket, Side	-	2	-
	331926-006	. . RETAINER, Gasket, Side	-	-	2
15	331926-003	. . RETAINER, Gasket, Top and Bottom	2	-	-
	331926-006	. . RETAINER, Gasket, Top and Bottom	-	2	-
	331926-005	. . RETAINER, Gasket, Top and Bottom	-	-	2
16	331879	. . LENS, Sign (Specify message)	1	-	-
	331880	. . LENS, Sign (Specify message)	-	1	-
	331881	. . LENS, Sign (Specify message)	-	-	1
17	200498-006	. HEX NUT, 1/4-20	3	3	3
18	200717-008	. WASHER, Internal-External Tooth, 1/4-in.	3	3	3
19	201487-000	. CARRIAGE BOLT, 1/4-20 by 1/2-in.	3	3	3
20	331790-000	. THREAD FORMING SCREW, Phillips Pan Head, 1/4-20 by 1-in.	3	3	3

FIGURE & INDEX NO.	PART NUMBER	DESCRIPTION	QTY. PER ASSEMBLY		
			A	B	C
6-1-21	200469-020	. MACHINE SCREW, Phillips Truss Head, 1/4-28 by 1/2-in.	3	3	3
22	200717-008	. WASHER, Internal-External Tooth, 1/4-in.	3	3	3
23	332235-000	. THREAD ROLLING SCREW, Phillips Truss Head, 1/4-20 by 1/2-in.	2	2	2
24	500733	. MAIN DOOR ASSEMBLY (See Figure 2)	1	-	-
	500713	. MAIN DOOR ASSEMBLY (See Figure 2)	-	1	-
	500695	. MAIN DOOR ASSEMBLY (See Figure 2)	-	-	1
25	200452-000	. DECAL, Wiring Diagram	1	1	1
26	201141-001	. SELF-DRILLING SCREW, Phillips Pan Head, No. 8-18 by 1/2-in.	3	3	3
27	201580-000	. LIGHT REFLECTOR ASSEMBLY	1	-	-
	201495-002	. LIGHT REFLECTOR ASSEMBLY	-	1	1
28	201879-002	. DECAL, Nameplate	1	-	-
	201879-003	. DECAL, Nameplate	-	1	-
	201879-004	. DECAL, Nameplate	-	-	1
29	500717	. CABINET ASSEMBLY (See Figure 5)	1	-	-
	500710	. CABINET ASSEMBLY (See Figure 5)	-	1	-
	500692	. CABINET ASSEMBLY (See Figure 5)	-	-	1

FIGURE & INDEX NO.	PART NUMBER	DESCRIPTION	QTY. PER ASSEMBLY		
			A	B	C
6-2-	500733	MAIN DOOR ASSEMBLY	R	-	-
	500713	MAIN DOOR ASSEMBLY	-	R	-
	500695	MAIN DOOR ASSEMBLY	-	-	R
1	200453-000	. INSTRUCTION, Loading	1	1	1
2	201141-001	. SELF-DRILLING SCREW, Phillips Pan Head, No. 8-18 by 1/2-in.	44	51	56
3	100808-000	. GASKET, Door	1	-	-
	100809-000	. GASKET, Door	-	1	-
	100810-000	. GASKET, Door	-	-	1
4	201871-000	. LINER, Door	1	-	-
	201870-000	. LINER, Door	-	1	-
	201821-000	. LINER, Door	-	-	1
5	201999-001	. INSULATION, Door	1	-	-
	201999-002	. INSULATION, Door	-	1	-
	201999-003	. INSULATION, Door	-	-	1
6	201037-000	. INSULATION, Door Kick Panel	-	1	-
	201038-000	. INSULATION, Door Kick Panel	-	-	1
7	200468-004	. SHEET METAL SCREW, Phillips Truss Head, No. 6 by 1/2-in.	6	9	9
8	100365	. VEND DOOR ASSEMBLY (See Figure 3)	1	-	-
	100162	. VEND DOOR ASSEMBLY (See Figure 3)	-	1	1
9	200468-004	. SHEET METAL SCREW, Phillips Truss Head, No. 6 by 1/2-in.	2	2	2
10	100888-000	. SHIELD, Drip	1	1	1
11	200468-004	. SHEET METAL SCREW, Phillips Truss Head, No. 6 by 1/2-in.	16	20	20
6-2-	500737	. EYELET ASSEMBLY	1	-	-
	500700	. EYELET ASSEMBLY	-	1	1
12	200468-004	. SHEET METAL SCREW, Phillips Truss Head, No. 6 by 1/2-in.	16	20	20
13	200445-001	. GASKET, Vend Door	1	-	-
	200445-002	. GASKET, Vend Door	-	1	1
14	100694-000	. RETAINER, Eyelet Glass	1	1	1
15	091063-400	. GLASS, Eyelet	1	1	1
16	091052-301	. LIGHT TUBE, Fluorescent	1	1	1
17	100610	. VEND DOOR JAM	1	-	-
	100629	. VEND DOOR JAM	-	1	1
6-2-	500703-000	. EYELET LIGHT BOX ASSEMBLY	1	1	1
18	187244-000	. MACHINE SCREW, Slotted Pan Head, No. 6-32 by 1/4-in.	4	4	4
19	091052-000	. SOCKET, Lamp	2	2	2
20	331945-000	. BUSHING, Snap	2	2	2
21	500653-000	. LIGHT BOX, Eyelet	1	1	1
22	500738	. EYELET	1	-	-
	500701	. EYELET	-	1	1
23	200633-000	. INSULATION, Bezel, Vend Door	2	2	2
24	201039-000	. INSULATION, Eyelet, Right-hand	1	1	1
25	200468-002	. SHEET METAL SCREW, Phillips Truss Head, No. 8 by 5/8-in.	10	10	10

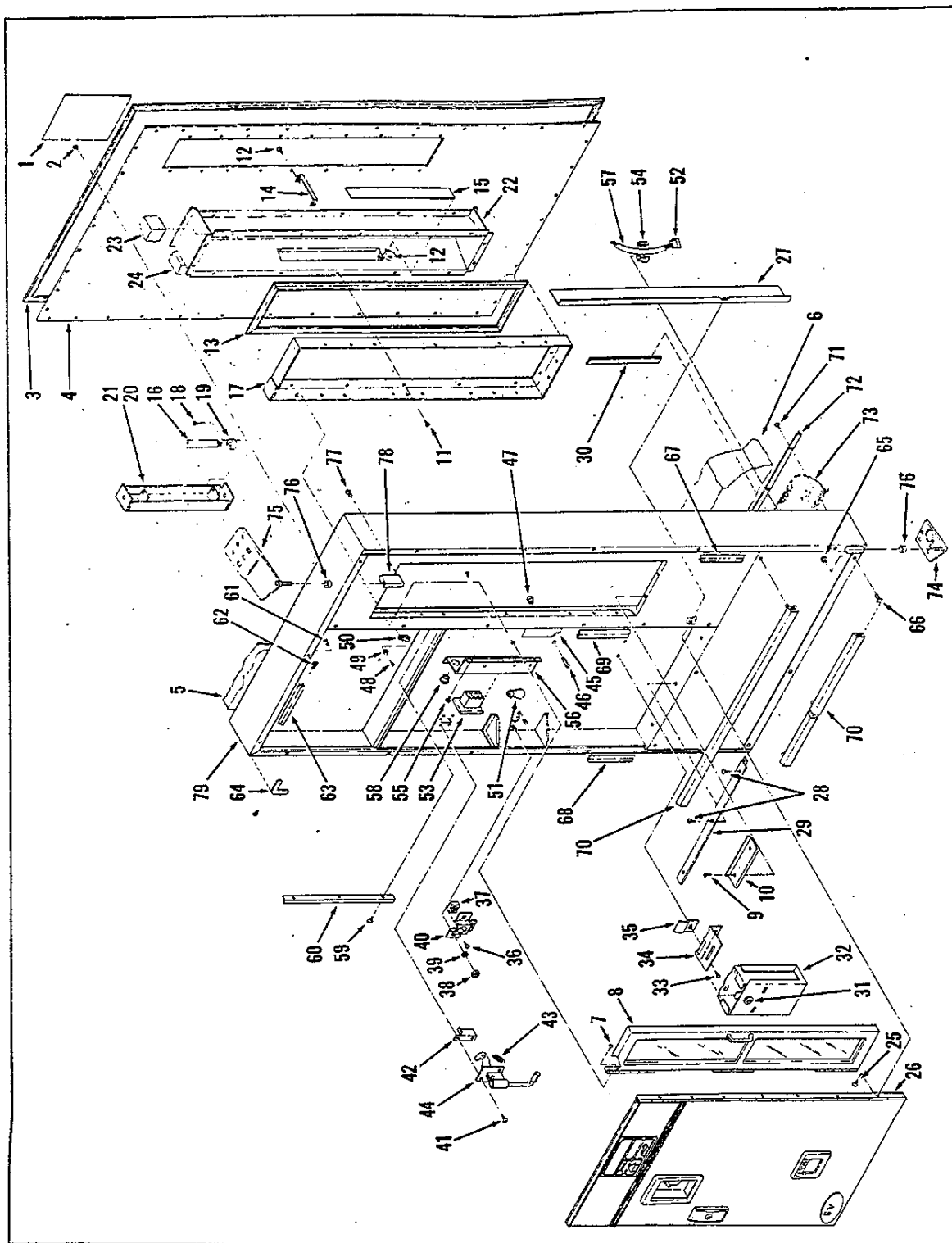


Figure 6-2. Main Door Assembly

FIGURE & INDEX NO.	PART NUMBER	DESCRIPTION	QTY. PER ASSEMBLY		
			A	B	C
6-2-26	331936	. MECHANISM DOOR ASSEMBLY (See Figure 4)	1	1	-
	331937	. MECHANISM DOOR ASSEMBLY (See Figure 4)	-	-	1
27	201997-000	. TAP STRIP, Mechanism Door	1	1	1
28	201141-001	. SELF-DRILLING SCREW, Phillips Pan Head, No. 8-18 by 1/2-in.	3	3	3
29	100608-000	. RETAINER, Gasket	1	1	-
	331777-000	. RETAINER, Gasket	-	-	1
30	200385-000	. GUARD, Wire	1	1	1
31	200253-001	. LOCK, Coin Box	1	1	1
32	500455-000	. COIN BOX	1	1	1
33	200468-004	. SHEET METAL SCREW, Phillips Truss Head, No. 6 by 1/2-in.	2	2	2
34	200426-000	. BRACKET, Coin Box	1	1	1
35	201611-000	. DEFLECTOR, Coin	1	1	1
36	200468-008	. SHEET METAL SCREW, Phillips Pan Head, No. 8 by 1/2-in.	1	1	1
37	201914-000	. SQUARE NUT, 1/2-13	1	1	1
38	200498-006	. HEX NUT, 1/4-20	3	3	3
39	200717-008	. WASHER, Internal-External Tooth, 1/4-in.	3	3	3
40	201994-000	. RETAINER, Nut	1	1	1
41	200468-004	. SHEET METAL SCREW, Phillips Truss Head, No. 6 by 1/2-in.	4	4	4
42	201805-000	. HOUSING, Latch	1	1	1
43	332236-000	. SPRING, Latch	1	1	1
44	500770-000	. LATCH, Door	1	1	1
45	501023-000	. DECAL, Instruction, Coin Mechanism	1	1	1
46	200469-020	. MACHINE SCREW, Phillips Truss Head, 1/4-28 by 1/2-in.	3	3	3
47	201416-002	. NUTSERT, 1/4-28	3	3	3
48	201141-001	. SELF-DRILLING SCREW, Phillips Pan Head, No. 8-18 by 1/2-in.	1	1	1
49	200729-004	. FLAT WASHER, No. 10	1	1	1
50	090002-705	. CLAMP, Cable	1	1	1
51	200295-000	. LAMP	1	1	1
52	200276-000	. PLUG, Molex	1	1	1
53	090002-400	. HOUSING, Plug	1	1	1
54	091051-801	. BUSHING, Strain Relief	1	2	2
55	200468-004	. SHEET METAL SCREW, Phillips Truss Head, No. 6 by 1/2-in.	4	4	4
56	200160-000	. BRACKET, Harness	1	1	1
57	100595-001	. HARNESS, Wiring	1	1	1
58	200274-004	. BUSHING, Snap	3	3	3
59	201141-001	. SELF-DRILLING SCREW, Phillips Pan Head, No. 8-18 by 1/2-in.	3	3	3
60	100607-000	. ANGLE, Retainer, Sign	1	-	-
	100627-000	. ANGLE, Retainer, Sign	-	1	1
61	200469-016	. MACHINE SCREW, Phillips Truss Head, No. 6-32 by 5/16-in.	3	3	3
62	201083-001	. WELD NUT, No. 6-32	3	3	3

FIGURE & INDEX NO.	PART NUMBER	DESCRIPTION	QTY. PER ASSEMBLY		
			A	B	C
6-2-63	201842-001	. TRIM, Top	1	1	-
	201842-002	. TRIM, Top	-	-	1
64	201052-000	. RETAINER, Corner, Trim	1	1	1
65	200498-003	. HEX NUT, Keps, No. 8-32	19	22	22
66	201051-001	. T-BOLT, No. 8-32 by 1/2-in.	19	22	22
67	201843-001	. TRIM, Side, Right-hand	1	-	-
	201843-002	. TRIM, Side, Right-hand	-	1	1
68	201844-001	. TRIM, Side, Left-hand	1	-	-
	201844-002	. TRIM, Side, Left-hand	-	1	1
69	201471-002	. TRIM, Vend Door	1	1	1
70	201845-001	. TRIM, Center and Bottom	2	2	-
	201845-002	. TRIM, Center and Bottom	-	-	2
71	201141-001	. SELF-DRILLING SCREW, Phillips Pan Head, No. 8-18 by 1/2-in.	3	3	3
72	200616-002	. RETAINER, Grill, Kickplate	2	2	-
	200616-001	. RETAINER, Grill, Kickplate	-	-	2
73	201916-001	. GRILL, Kickplate	1	1	-
	201916-002	. GRILL, Kickplate	-	-	1
74	500663	. HINGE, Bottom	1	1	1
75	500662	. HINGE, Top	1	1	1
76	201928-000	. SPACER, Hinge	2	2	2
77	200469-014	. MACHINE SCREW, Phillips Round Head, 1/4-20 by 1/2-in.	4	4	4
78	201816-000	. BEARING PLATE, Hinge	2	2	2
79	500734	. DOOR	1	-	-
	500714	. DOOR	-	1	-
	500696	. DOOR	-	-	1

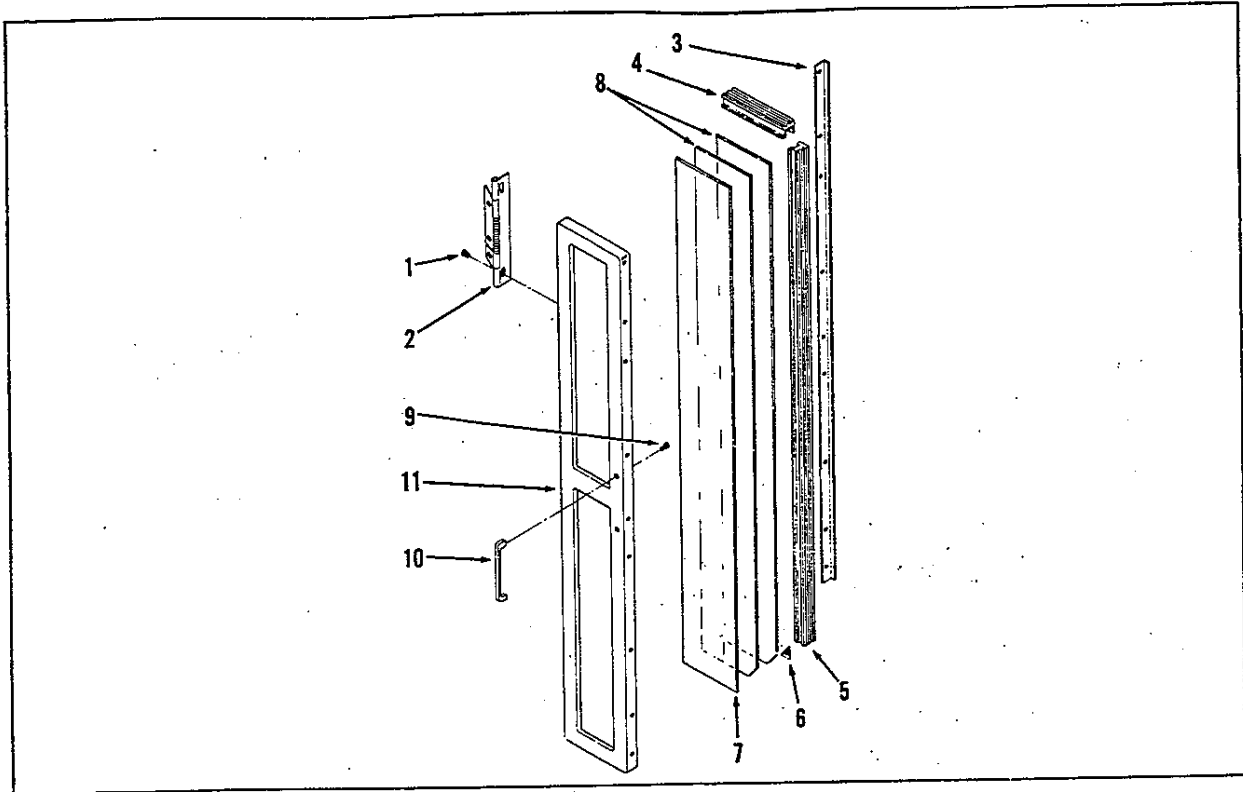


Figure 6-3. Vend Door Assembly

FIGURE & INDEX NO.	PART NUMBER	DESCRIPTION	QTY. PER ASSEMBLY		
			A	B	C
6-3-	100365	VEND DOOR ASSEMBLY	R	-	-
	100162	VEND DOOR ASSEMBLY	-	R	R
1	200468-003	. SHEET METAL SCREW, Phillips Truss Head, No. 8 by 3/8-in.	6	-	-
	188177-000	. SHEET METAL SCREW, Phillips Truss Head, No. 8 by 3/8-in.	-	9	9
2	101167-000	. HINGE, Wing	3	3	2
3	100370-000	. ANGLE, Retainer	1	-	-
	100170-000	. ANGLE, Retainer	-	1	1
4	100169-000	. GASKET, Horizontal	2	2	2
5	100369-000	. GASKET, Vertical	2	-	-
	100168-000	. GASKET, Vertical	-	2	2
6	200451-000	. SCREEN, Insect	1	1	1
7	091072-701	. GLASS PLATE	1	-	-
	091070-200	. GLASS PLATE	-	1	1
8	091072-700	. GLASS PLATE	2	-	-
	091070-201	. GLASS PLATE	-	2	2
9	200469-011	. MACHINE SCREW, Phillips Truss Head, No. 10-24 by 3/8-in.	2	2	2
10	200256-000	. HANDLE, Vend Door	1	1	1
11	100366	. FRAME, Vend Door	1	-	-
	200465	. FRAME, Vend Door	-	1	1

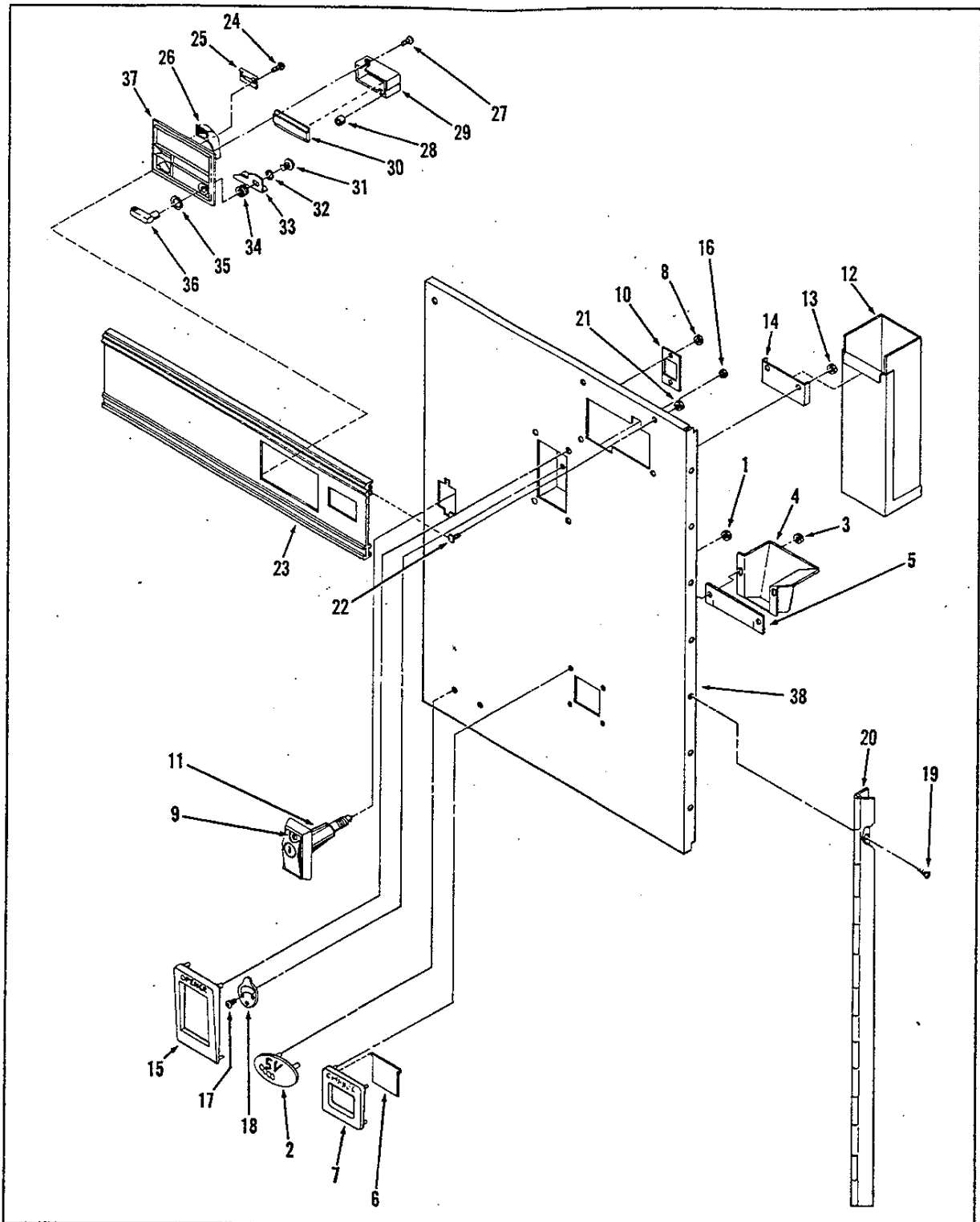


Figure 6-4. Mechanism Door Assembly

FIGURE & INDEX NO.	PART NUMBER	DESCRIPTION	QTY. PER ASSEMBLY		
			A	B	C
6-4-	331936	MECHANISM DOOR ASSEMBLY	R	R	-
	331937	MECHANISM DOOR ASSEMBLY	-	-	R
1	200055-001	. PALNUT	2	2	2
2	200873-000	. EMBLEM, "SV"	1	1	1
3	200055-001	. PALNUT	4	4	4
4	201649-000	. CUP, Coin Return	1	1	1
5	201422-000	. TAB, Switch, Anti-payout	1	1	1
6	200102-000	. DOOR, Coin Return	1	1	1
7	200002-000	. BEZEL, Coin Return	1	1	1
8	330172-000	. HEX NUT, Keps, No. 10-24	2	2	2
9	200469-001	. MACHINE SCREW, Phillips Fillister Head, No. 10-24 by 3/4-in.	2	2	2
10	201996-000	. PLATE, Backup, Lock	1	1	1
11	202039-000	. LOCK HANDLE, Pop-out	1	1	1
12	500463-000	. CROWN BOX	1	1	1
13	200055-001	. PALNUT	4	4	4
14	201998-000	. HANGER, Crown Box	1	1	1
15	200042-000	. BEZEL, Crown Puller	1	1	1
16	200498-003	. HEX NUT, Keps, No. 8-32	3	3	3
17	200469-009	. MACHINE SCREW, Phillips Truss Head, No. 8-32 by 5/8-in.	3	3	3
18	188103-000	. CROWN PULLER	1	1	1
19	188117-000	. SHEET METAL SCREW, Phillips Truss Head, No. 8 by 3/8-in.	7	7	7
20	091070-700	. HINGE, Mechanism Door	1	1	1
21	330181-000	. HEX NUT, Keps, No. 6-32	6	6	6
22	200727-000	. T-BOLT, No. 6-32 by 3/8-in.	6	6	6
23	200518-001	. PANEL, Dashboard	1	1	-
	200518-002	. PANEL, Dashboard	-	-	1
6-4-	500526-000	. COIN INSERT ASSEMBLY	1	1	1
24	200470-008	. . SELF-THREADING SCREW, Phillips Round Head, No. 6-32 by 3/16-in.	2	2	2
25	201523-000	. . RETAINER, Coin Drop	1	1	1
26	201748-001	. . CHUTE, Coin Intake	1	1	1
27	200470-002	. . SELF-THREADING SCREW, Phillips Round Head, No. 8-32 by 1/4-in.	2	2	2
28	201645-000	. . STOP, Coin Release	1	1	1
29	500291-000	. . HOUSING, Correct Change	1	1	1
30	201521-000	. . LENS, Correct Change	1	1	1
31	200469-020	. . MACHINE SCREW, Phillips Truss Head, 1/4-28 by 1/2-in.	1	1	1
32	200717-008	. . WASHER, Internal-External Tooth, 1/4-in.	1	1	1
33	201577-000	. . LEVER, Coin Release	1	1	1
34	091076-100	. . SPRING, Torsion	1	1	1
35	100816-000	. . WASHER, Coin Release	1	1	1
36	200008-000	. . HANDLE, Coin Release	1	1	1
37	201516-000	. . CASTING, Coin Insert	1	1	1
38	331863	. DOOR, Mechanism	1	1	-
	331864	. DOOR, Mechanism	-	-	1

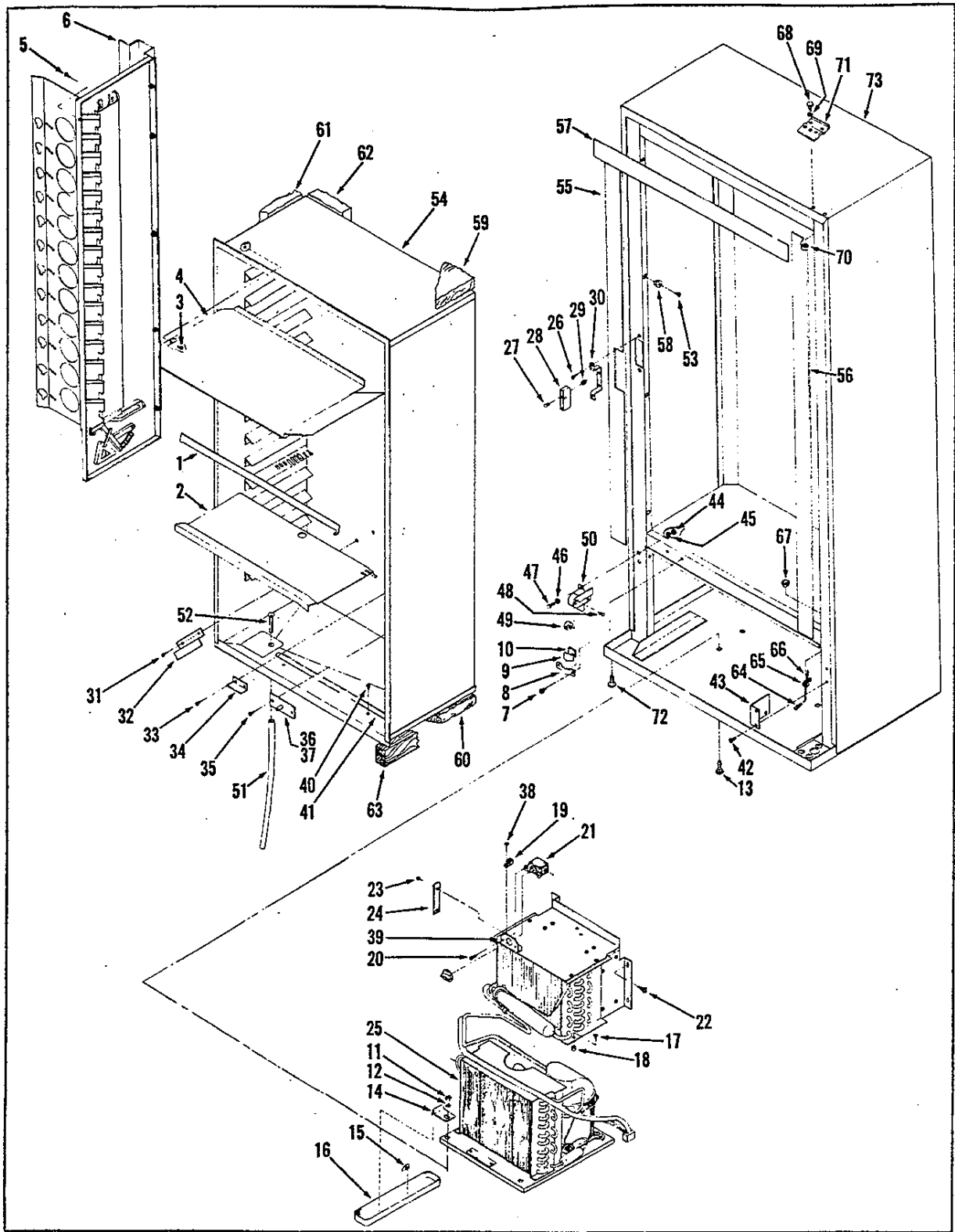


Figure 6-5. Cabinet Assembly

FIGURE & INDEX NO.	PART NUMBER	DESCRIPTION	QTY. PER ASSEMBLY		
			A	B	C
6-5-	500717	CABINET ASSEMBLY	R	-	-
	500710	CABINET ASSEMBLY	-	R	-
	500692	CABINET ASSEMBLY	-	-	R
1	100262-000	. BAR, Depth	8	12	-
	100251-000	. BAR, Depth	-	-	12
2	100490-000	. SHELF, Bottle	8	12	-
	100491-000	. SHELF, Bottle	-	-	12
3	201141-001	. SELF-DRILLING SCREW, Phillips Pan Head, No. 8-18 by 1/2-in.	-	2	2
4	201470-000	. SHELF, Precool	-	1	-
	201469-000	. SHELF, Precool	-	-	1
5	201141-001	. SELF-DRILLING SCREW, Phillips Pan Head, No. 8-18 by 1/2-in.	3	4	5
6	500013-001	. VEND RACK ASSEMBLY (See Figure 6)	1	-	-
	500013-002	. VEND RACK ASSEMBLY (See Figure 6)	-	1	1
7	201141-001	. SELF-DRILLING SCREW, Phillips Pan Head, No. 8-18 by 1/2-in.	2	2	2
8	200156-000	. COVER, Refrigeration Tube	1	1	1
9	200407-000	. SEAL, Refrigeration Tube	1	1	1
10	200407-001	. SEAL, Refrigeration Tube	1	1	1
11	200498-007	. HEX NUT, 5/16-18	2	2	2
12	186148-000	. LOCK WASHER, 5/16-in.	2	2	2
13	090002-900	. CARRIAGE BOLT, 5/16-18 by 1-1/4 in.	2	2	2
14	201925-000	. CLIP, Anchor	1	1	1
15	200341-000	. CLIP, Tube	1	1	1
16	200623-000	. PAN, Evaporator	1	1	1
17	201141-002	. SELF-DRILLING SCREW, Phillips Pan Head, No. 10-18 by 3/4-in.	2	2	2
18	331760-000	. COLLAR, Gate	2	2	2
19	090002-701	. CLAMP, Control	1	1	1
20	186150-000	. MACHINE SCREW, Phillips Round Head, No. 8-32 by 3/8-in.	2	2	2
21	332411-000	. THERMOSTAT	1	-	-
	332409-000	. THERMOSTAT	-	1	1
22	201141-001	. SELF-DRILLING SCREW, Phillips Pan Head, No. 8-18 by 1/2-in.	4	4	4
23	188117-000	. SHEET METAL SCREW, Phillips Truss Head, No. 8 by 3/8-in.	-	2	2
24	332386-000	. CLAMP, Capillary	-	1	1
25	201924-000	. REFRIGERATION SYSTEM (See Figure 7)	1	-	-
	201923-000	. REFRIGERATION SYSTEM (See Figure 7)	-	1	-
	201921-000	. REFRIGERATION SYSTEM (See Figure 7)	-	-	1
26	200469-020	. MACHINE SCREW, Phillips Truss Head, 1/4-28 by 1/2-in.	2	2	2
6-5-	500769-000	. LATCH STRIKE ASSEMBLY	1	1	1
27	331790-000	. . THREAD ROLLING SCREW, Phillips Pan Head, 1/4-20 by 1-in.	2	2	2
28	091075-000	. . STRIKE, Latch	1	1	1
29	201652-000	. . SPRING, Latch Strike	1	1	1

FIGURE & INDEX NO.	PART NUMBER	DESCRIPTION	QTY. PER ASSEMBLY		
			A	B	C
6-5-30	200167-000	. . ADAPTER, Door Latch Strike	1	1	1
31	201141-001	. SELF-DRILLING SCREW, Phillips Pan Head, No. 8-18 by 1/2-in.	2	2	2
32	102035-000	. BAFFLE, Air	1	1	1
33	201141-001	. SELF-DRILLING SCREW, Phillips Pan Head, No. 8-18 by 1/2-in.	2	2	2
34	200614-000	. DEFLECTOR, Air	1	1	1
35	187254-000	. SHEET METAL SCREW, Phillips Truss Head, No. 6 by 3/8-in.	4	4	4
6-5-	500674-000	. VEND RACK HANGER ASSEMBLY	2	2	2
36	101112-000	. . PIN, Rack	1	1	1
37	201820-000	. . PLATE, Rack	1	1	1
38	187254-000	. SHEET METAL SCREW, Phillips Truss Head, No. 6 by 3/8-in.	2	-	-
39	332408-000	. BRACKET, Thermostat	1	-	-
40	201141-001	. SELF-DRILLING SCREW, Phillips Pan Head, No. 8-18 by 1/2-in.	2	2	2
41	200386-000	. GUARD, Lead Cord	1	1	1
42	201141-001	. SELF-DRILLING SCREW, Phillips Pan Head, No. 8-18 by 1/2-in.	2	2	2
43	200159-000	. BRACKET, Mounting, Connector	1	1	1
44	200498-006	. HEX NUT, 1/4-20	3	3	3
45	200717-001	. WASHER, External Tooth, 1/4-in.	3	3	3
46	150779-000	. FLAT WASHER, 1/4-in.	3	3	3
47	186394-000	. CAP SCREW, Hex Head, 1/4-20 by 5/8-in.	3	3	3
6-5-	500694-000	. DOOR LIFT ASSEMBLY	1	1	1
48	201932-000	. . RIVET, Round Head, 3/16 by 1-in.	1	1	1
49	201931-000	. . ROLLER, Door Lift	1	1	1
50	201929-000	. . BRACKET, Mounting, Door Lift	1	1	1
51	091060-300	. EXTENSION, Drain Tube	1	1	1
52	100042-000	. TUBE, Drain	1	1	1
53	200468-001	. SHEET METAL SCREW, Phillips Truss Head, No. 10 by 1-in.	6	8	8
54	100569-000	. LINER	1	-	-
	100583-000	. LINER	-	1	-
	100588-000	. LINER	-	-	1
55	201475-007	. BREAKER STRIP, Left-hand	1	-	-
	201475-008	. BREAKER STRIP, Left-hand	-	1	1
56	201475-005	. BREAKER STRIP, Right-hand	1	-	-
	201475-004	. BREAKER STRIP, Right-hand	-	1	1
57	201475-001	. BREAKER STRIP, Top and Bottom	2	2	-
	201475-002	. BREAKER STRIP, Top and Bottom	-	-	2
58	090004-300	. GROMMET, Plastic	6	8	8
59	091040-900	. INSULATION, Top	1	1	-
	091041-400	. INSUALTION, Top	-	-	1
60	091041-000	. INSULATION, Bottom	1	1	-
	091041-500	. INSULATION, Bottom	-	-	1
61	091040-800	. INSULATION, Side	2	-	-
	091041-200	. INSULATION, Side	-	2	2

FIGURE & INDEX NO.	PART NUMBER	DESCRIPTION	QTY. PER ASSEMBLY		
			A	B	C
6-5-62	091041-100	. INSULATION, Back	1	-	-
	091041-300	. INSULATION, Back	-	1	-
	091041-600	. INSULATION, Back	-	-	1
63	100568-000	. SUPPORT, Liner, Bottom	2	2	2
64	330620-000	. TERMINAL	2	2	2
65	091051-801	. BUSHING, Strain Relief	1	1	1
66	200076-001	. WIRE, Heater	1	-	-
	200076-002	. WIRE, Heater	-	1	1
67	200274-004	. BUSHING, Snap	4	4	4
68	200716-001	. CAP SCREW, Hex Head, 1/4-20 by 2/4-in.	2	2	2
69	200717-001	. WASHER, External Tooth, 1/4-in.	2	2	2
70	200498-006	. HEX NUT, 1/4-20	2	2	2
71	201992	. PLATE, Hinge	1	1	1
72	090101-400	. SCREW, Leveling	4	4	4
73	100534	. CABINET	1	1	-
	500711	. CABINET	-	1	-
	500693	. CABINET	-	-	1

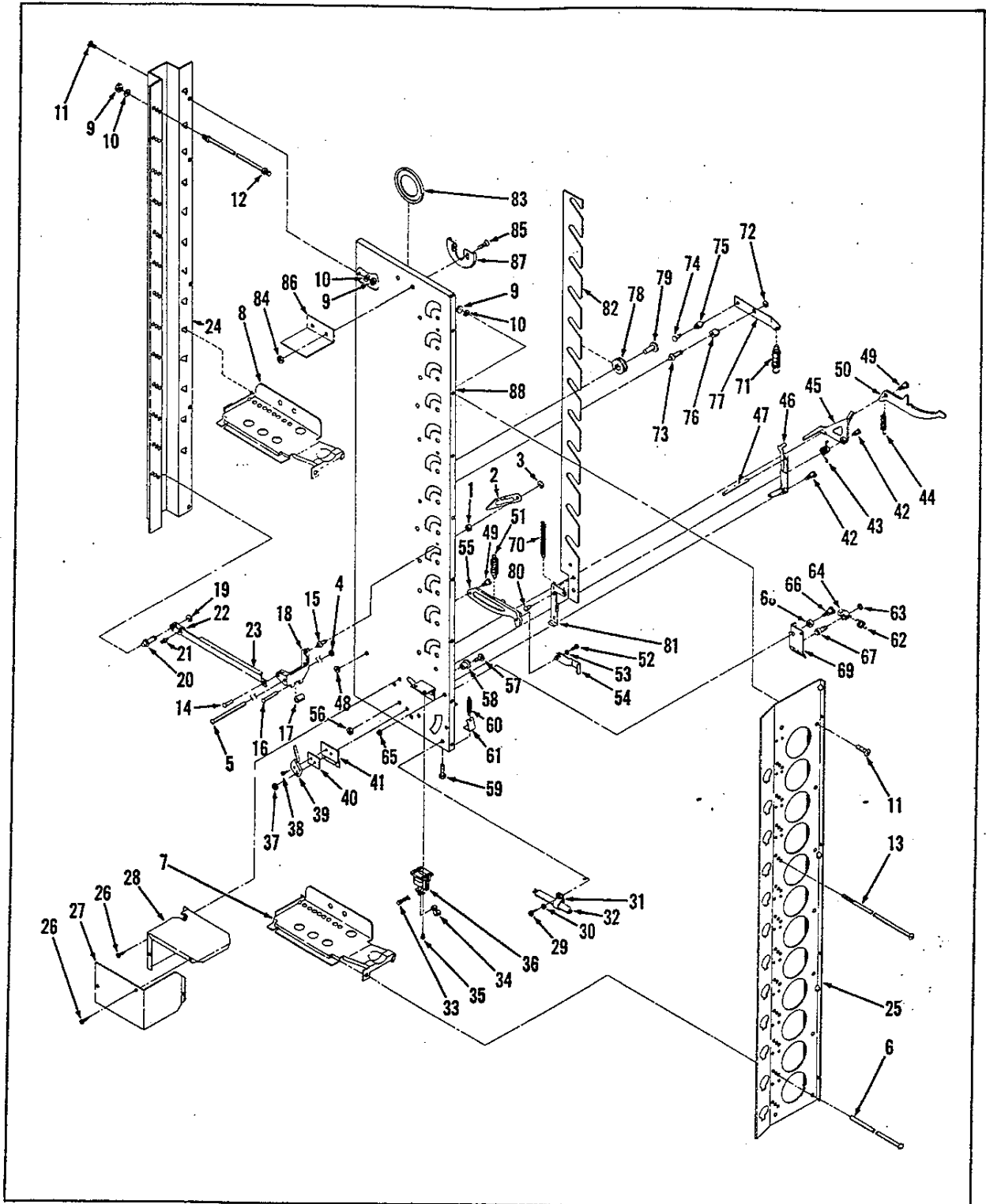


Figure 6-6. Vend Rack Assembly

FIGURE & INDEX NO.	PART NUMBER	DESCRIPTION	QTY. PER ASSEMBLY		
			A	B	C
6-6-	500013-001	VEND RACK ASSEMBLY	R	-	-
	500013-002	VEND RACK ASSEMBLY	-	R	R
1	093000-403	. RETAINING RING, "E"	8	12	12
2	200142-000	. FINGER, Selector	8	12	12
3	331760-000	. COLLAR, Gate	8	12	12
4	091078-000	. SPEED NUT, Tubular	8	12	12
5	093002-200	. ROD, Pivot, Gate	8	12	12
6	100672-000	. ROD, Adjusting	7	10	10
7	200162-000	. TRAY, Bottle	7	10	10
8	500040-000	. TRAY, Bottle	2	2	2
9	200498-004	. HEX NUT	15	18	18
10	200729-005	. FLAT WASHER	13	19	19
11	200469-002	. MACHINE SCREW, Phillips Truss Head, No. 10-24 by 5/8-in.	12	14	14
12	101085-001	. TIE BOLT	2	2	2
13	090100-301	. TIE BOLT	1	2	2
6-6-	100783-001	. VEND RACK BACK CHANNEL ASSEMBLY	1	-	-
	100783-002	. VEND RACK BACK CHANNEL ASSEMBLY	-	1	1
14	093001-405	. . RIVET, Round Head	8	12	12
6-6-	100075-000	. . GATE CASTING ASSEMBLY	8	12	12
15	331764-000	. . . SHOULDER PIN, Gate	1	1	1
16	093001-500	. . . RIVET, Round Head	1	1	1
17	331759-000	. . . GATE, Roller	1	1	1
18	200138-000	. . . CASTING, Gate	1	1	1
19	093000-402	. . RETAINING RING, "E"	8	12	12
20	331758-000	. . SHOULDER PIN	8	12	12
6-6-	100759-000	. . BOTTLE LOCKOUT ASSEMBLY	8	12	12
21	331761-000	. . . SHOULDER PIN	1	1	1
22	100065-000	. . . LINK, Bar, Lockout	2	2	2
23	100489-000	. . . ARM, Lockout, Bottle	1	1	1
24	100745-000	. . CHANNEL, Back	1	-	-
	100777-000	. . CHANNEL, Back	-	1	1
25	100785-001	. PANEL, Front, Vend Rack	1	-	-
	100785-002	. PANEL, Front, Vend Rack	-	1	1
26	200468-004	. MACHINE SCREW, Phillips Truss Head, No. 6 by 1/2-in.	6	6	6
27	102028-000	. COVER, Solenoid	1	1	1
28	102029-000	. BRACKET, Housing, Solenoid	1	1	1
29	201141-001	. SELF-DRILLING SCREW, Phillips Pan Head, No. 8-18 by 1/2-in.	1	1	1
30	200729-004	. FLAT WASHER	1	1	1
31	090002-705	. CLAMP, Cable	1	1	1
32	100754-000	. HARNESS, Wiring	1	1	1
6-6-	500007-001	. RIGHT-HAND VEND ASSEMBLY	1	-	-
	500007-000	. RIGHT-HAND VEND ASSEMBLY	-	1	1
33	093000-701	. . COTTER PIN, 5/32 by 1-in.	1	1	1
34	200470-002	. . SELF-THREADING SCREW, Phillips Round Head, No. 8-32 by 1/4-in.	2	2	2
35	331755-000	. . ARM, Actuator, Solenoid	1	1	1

FIGURE & INDEX NO.	PART NUMBER	DESCRIPTION	QTY. PER ASSEMBLY		
			A	B	C
6-6-36	091050-300	. . SOLENOID	1	1	1
37	200498-013	. . HEX NUT	2	2	2
6-6-	500031-000	. . BLOCKING SWITCH MOUNTING ASSEMBLY	1	1	1
38	200470-004	. . . SELF-THREADING SCREW, Phillips Truss Head, No. 4-40 by 5/8-in.	2	2	2
39	200145-000	. . . SWITCH, Micro	1	1	1
40	200144-000	. . . INSULATOR, Switch	1	1	1
41	200143-000	. . . BRACKET, Mounting, Switch	1	1	1
42	331757-000	. . PIVOT, Lever, Cocking	2	2	2
43	091076-100	. . SPRING, Torsion	1	1	1
44	200091-000	. . SPRING, Trip Release	1	1	1
45	200020-000	. . ACTUATOR, Trip	1	1	1
46	200032-000	. . SUPPORT, Locking	1	1	1
47	091077-900	. . . PIN, Drive Lock	1	1	1
48	200498-013	. . HEX NUT	2	2	2
49	331757-000	. . PIVOT, Lever, Cocking	2	2	2
50	200021-000	. . RELEASE, Trip	1	1	1
51	200089-000	. . SPRING, Ring, Locking	1	1	1
6-6-	500412-000	. . ANTI-THEFT SUPPORT ASSEMBLY	1	1	1
52	200469-003	. . . MACHINE SCREW, Phillips Truss Head, No. 8-32 by 3/8-in.	1	1	1
53	200717-003	. . . WASHER, External Tooth, No. 8	1	1	1
54	201295-000	. . . PLATE, Anti-theft	1	1	1
55	200113-000	. . . RING, Lock	1	1	1
56	330172-000	. . HEX NUT, Keps, No. 10-24	1	1	1
57	200469-002	. . MACHINE SCREW, Phillips Truss Head, No. 10-24 by 5/8-in.	1	1	1
58	100878-000	. . BAR, Stop Gate	1	1	1
59	200470-005	. . SELF-THREADING SCREW, HEX HEAD, No. 10-24 by 1-in.	1	1	1
60	200087-000	. . SPRING, Adjustment	1	1	1
61	200064-000	. . RETAINER, Spring, Pawl	1	1	1
62	200090-000	. . SPRING, Pawl	1	1	1
63	093000-404	. . RETAINING RING, "E"	1	1	1
64	200026-000	. . PAWL	1	1	1
65	200498-013	. . HEX NUT	1	1	1
66	331757-000	. . PIVOT, Lever, Cocking	1	1	1
6-6-	500009-000	. . ADJUSTABLE PAWL ASSEMBLY	1	1	1
67	331758-000	. . . PIN, Pawl	1	1	1
68	200049-000	. . . BEARING, Pivot, Pawl	1	1	1
69	200050-000	. . . BRACKET, Pivot, Pawl	1	1	1
70	200088-000	. . SPRING, Gate Bar	1	1	1
71	200092-000	. . SPRING, Ring, Locking	1	1	1
72	093000-404	. . RETAINING RING, "E"	2	2	2
73	200048-000	. . PIN, Ring Lift Bracket	2	2	2
6-6-	500010-000	. . RING LIFT BRACKET ASSEMBLY	2	2	2
74	200046-000	. . . PIN, Roller	1	1	1
75	200047-000	. . . ROLLER	1	1	1
76	200045-000	. . . BEARING	1	1	1

FIGURE & INDEX NO.	PART NUMBER	DESCRIPTION	QTY. PER ASSEMBLY		
			A	B	C
6-6-77	200044-000	. . . BRACKET	1	1	1
78	331765-000	. . ROLLER, Slipping Bar	8	8	8
79	331756-000	. . PIVOT, Bar, Lockout	8	8	8
6-6-	500011-001	. . GATE LOCKOUT BAR ASSEMBLY	1	-	-
	500011-000	. . GATE LOCKOUT BAR ASSEMBLY	-	1	1
80	093001-402	. . . RIVET, Round Head	2	2	2
81	200025-000	. . . CASTING, Lockout, Gate	1	1	1
82	200069-001	. . . BAR, Lockout, Gate	1	-	-
	200069-000	. . . BAR, Lockout, Gate	-	1	1
83	331763-000	. . RING, Aluminum	8	12	12
84	330172-000	. . HEX NUT, Keps, No. 10-24	2	2	2
85	200469-002	. . MACHINE SCREW, Phillips Truss Head, No. 10-24 by 5/8-in.	2	2	2
86	100063-000	. . ANGLE, Back	1	1	1
87	331762-000	. . RING, Adjustment	1	1	1
88	500008-001	. . RACK, Vend, Right-hand	1	-	-
	500008-000	. . RACK, Vend, Right-hand	-	1	1

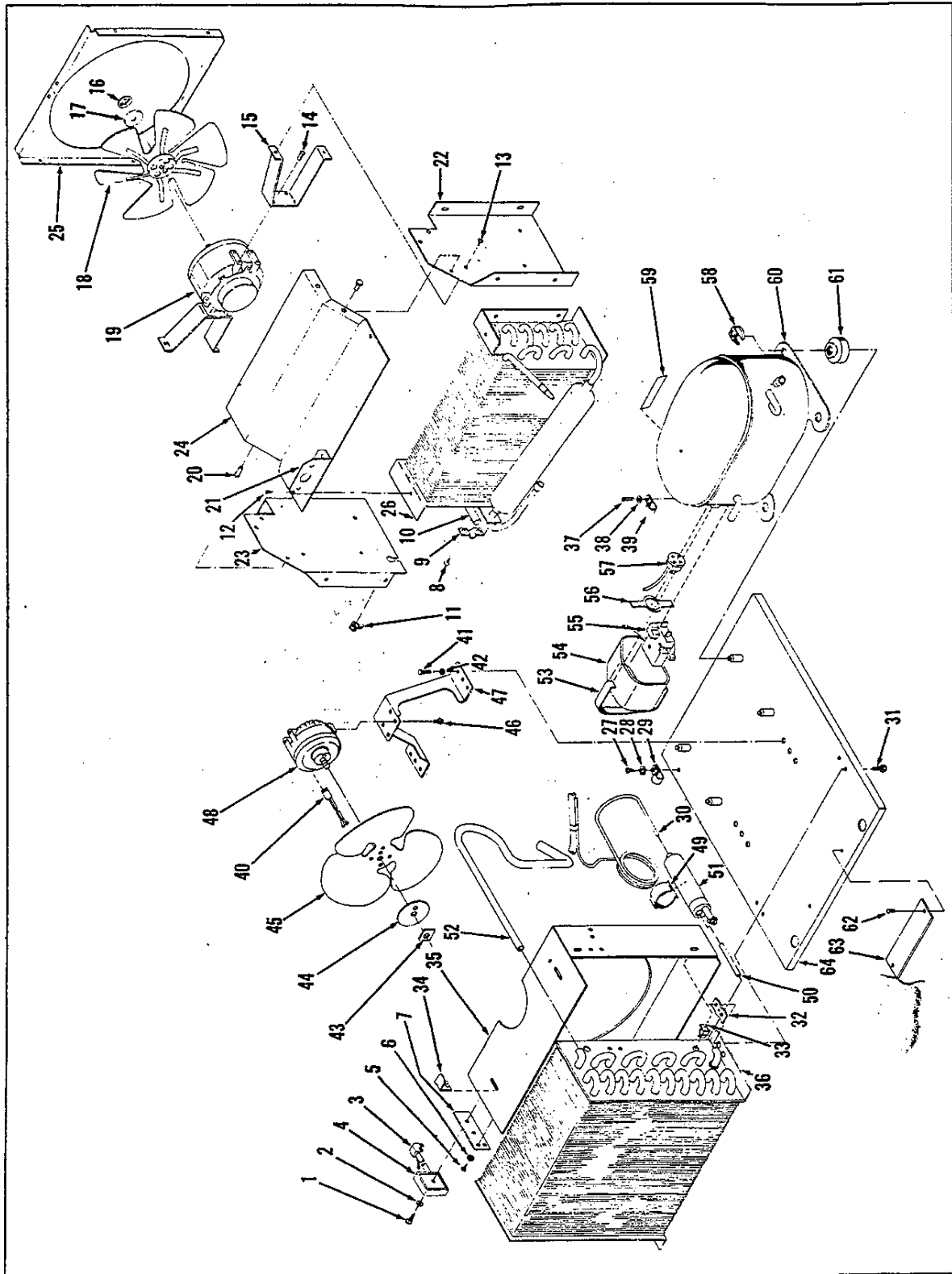


Figure 6-7. Refrigeration Chassis Assembly

FIGURE & INDEX NO.	PART NUMBER	DESCRIPTION	QTY. PER ASSEMBLY		
			A	B	C
6-7-	201924-000	REFRIGERATION CHASSIS ASSEMBLY	R	-	-
	201923-000	REFRIGERATION CHASSIS ASSEMBLY	-	R	-
	201921-000	REFRIGERATION CHASSIS ASSEMBLY	-	-	R
1	331309-000	. SHEET METAL SCREW, Phillips Truss Head, No. 8 by 1/2-in.	2	2	2
2	187455-000	. LOCK WASHER, No. 8	2	2	2
3	187765-000	. ADAPTER, Ground, 3-prong	1	1	1
4	332412-000	. HARNESS, Service	1	1	1
5	332392-000	. SHEET METAL SCREW, Phillips Pan Head, No. 8 by 1-1/2 in.	1	1	1
6	187455-000	. LOCK WASHER, No. 8	1	1	1
7	332413-000	. BRACKET, Mounting, Harness	1	1	1
8	188117-000	. SHEET METAL SCREW, Phillips Truss Head, No. 8 by 3/8-in.	2	-	-
9	332383-000	. CLAMP, Well, Control	1	-	-
10	332385-000	. WELL, Control	1	-	-
11	091051-801	. BUSHING, Relief, Strain	1	1	-
12	188117-000	. SHEET METAL SCREW, Phillips Truss Head, No. 8 by 3/8-in.	6	8	8
6-7-	332498-000	. EVAPORATOR FAN AND SHROUD ASSEMBLY	1	-	-
	332497-000	. EVAPORATOR FAN AND SHROUD ASSEMBLY	-	1	-
	332495-000	. EVAPORATOR FAN AND SHROUD ASSEMBLY	-	-	1
13	320271-000	. . THREAD ROLLING SCREW, Phillips Pan Head, No. 6-32 by 3/8-in.	4	4	4
14	186154-000	. . MACHINE SCREW, Phillips Pan Head, No. 8-36 by 5/16-in.	4	4	4
15	332403-000	. . STRAP, Motor	2	-	-
	332404-000	. . STRAP, Motor	-	1	1
16	186097-000	. . SPEED NUT	1	1	1
17	187394-000	. . SILENCER, Neoprene	1	1	1
18	332419-000	. . BLADE, Fan	1	1	1
19	332417-000	. . MOTOR, 9 watt	1	1	1
20	330715-000	. . RIVET, Pop	10	10	10
21	332408-000	. . BRACKET, Control	-	1	1
22	322344-000	. . PLATE, End, Left-hand	1	-	-
	332346-000	. . PLATE, End, Left-hand	-	1	1
23	332343-000	. . PLATE, End, Right-hand	1	-	-
	332345-000	. . PLATE, End, Right-hand	-	1	1
	332353-000	. . COVER, Evaporator	1	-	-
	332354-000	. . COVER, Evaporator	-	1	-
	332355-000	. . COVER, Evaporator	-	-	1
25	332349-000	. . SHROUD, Fan, Evaporator	1	1	1
26	332425-000	. COIL, Evaporator (Includes Accumulator)	1	-	-
	332341-000	. COIL, Evaporator (Includes Accumulator)	-	1	-
	332342-000	. COIL, Evaporator (Includes Accumulator)	-	-	1
27	310059-000	. SHEET METAL SCREW, Phillips Truss Head, No. 10 by 3/8-in.	1	1	1
28	200717-012	. WASHER, Internal-External Tooth, No. 10	1	1	1
29	332446-000	. CLAMP, Suction Line	1	1	1

FIGURE & INDEX NO.	PART NUMBER	DESCRIPTION	QTY. PER ASSEMBLY		
			A	B	C
6-7-30	332508-000	. SUCTION LINE ASSEMBLY	1	-	-
	332503-000	. SUCTION LINE ASSEMBLY	-	1	1
31	332393-000	. CAP SCREW, Slotted Hex Head, 1/4 by 3/8-in.	4	4	4
32	332416-000	. SPEED NUT, Twin	2	2	2
33	332415-000	. CLIP, Shroud, Side	4	4	4
34	332414-000	. CLIP, Shroud, Top	2	2	2
35	332405-000	. SHROUD, Condenser	1	1	1
36	332339-000	. COIL, Condenser, 1/4 H. P.	1	1	-
	332338-000	. COIL, Condenser, 1/3 H. P.	-	-	1
37	310648-000	. THREAD ROLLING SCREW, Slotted Hex Head, No. 10-32 by 3/8-in.	1	1	1
38	200729-004	. FLAT WASHER, No. 10	1	1	1
39	090002-705	. CLAMP, Cable	1	1	1
40	332430-000	. CORD, Extension	1	1	1
41	332393-000	. CAP SCREW, Slotted Hex Head, 1/4-20 by 3/8-in.	4	4	4
42	150778-000	. LOCK WASHER	4	4	4
43	186097-000	. SPEED NUT	1	1	1
44	187394-000	. SILENCER, Neoprene	1	1	1
45	332420-000	. BLADE, Fan	1	1	1
46	186154-000	. MACHINE SCREW, Phillips Pan Head, No. 8-36 by 5/16-in.	4	4	4
47	187395-000	. BRACKET, Mounting, Motor	1	1	1
48	332418-000	. MOTOR, 5 watt	1	1	1
49	332390-000	. CLIP, Spring, Drier	1	1	1
50	187215-000	. TUBE, Connecting, Drier	1	1	1
51	189453-000	. DRIER	1	1	1
52	332437-000	. LINE, Discharge	1	1	1
53	187636-000	. STRAP, Bale	1	1	1
54	187638-000	. COVER	1	1	1
55	330675-000	. RELAY	1	1	-
	331564-000	. RELAY	-	-	1
56	187637-000	. SPRING, Overload	1	1	1
57	330676-000	. OVERLOAD	1	1	-
	331565-000	. OVERLOAD	-	-	1
58	187888-000	. CLIP, Retainer	4	4	4
59	332492-000	. DECAL, Warning	1	1	1
60	330674-000	. COMPRESSOR, 1/4 H. P.	1	-	-
	331563-000	. COMPRESSOR, 1/3 H. P.	-	-	1
61	189723-000	. GROMMET	4	4	4
62	310475-000	. DRIVE SCREW, Round Head, No. 4 by 1/4-in.	2	2	2
63	332445-000	. NAMEPLATE	1	-	-
	332444-000	. NAMEPLATE	-	1	-
	332442-000	. NAMEPLATE	-	-	1
64	332397-000	. BASE	1	1	1